

COUNTRY DRIVE OFFICE BUILDING

2925 COUNTRY DRIVE, LITTLE CANADA, MN 55117

FOR SALE

A PERFECT SPACE FOR YOUR BUSINESS

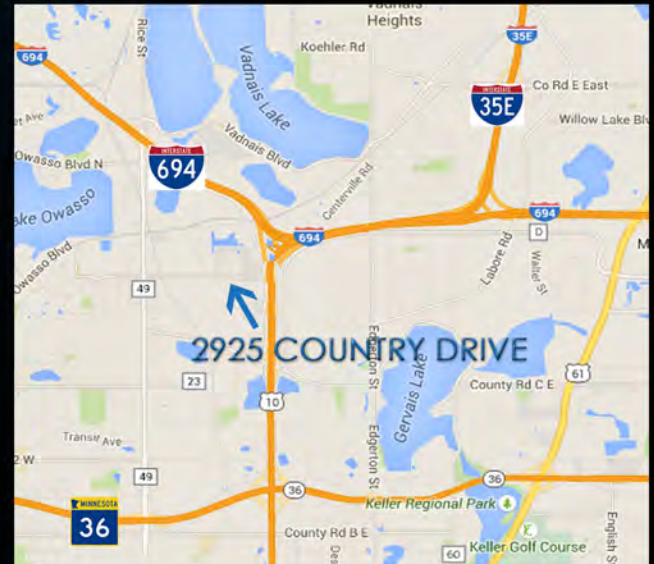


REDUCED PRICE

~~\$3,190,000.00~~ \$2,250,000.00

2016 TAXES \$95,125.00

- 30,000 SF EXECUTIVE OFFICE BUILDING
- 2001 CONSTRUCTION
- LOCATED JUST OFF 35E AND LITTLE CANADA ROAD
- ABILITY TO MULTI-TENANT
- SPECTACULAR AESTHETIC APPEAL
- PLUG & PLAY WITH FURNITURE IN PLACE
- BACK UP GENERATOR



JEFF SALZBRUN
612-788-1552
jeffs@essencerealestate.com

JEFF NORDNESS
651-341-5044
jeff@essencerealestate.com

OFFICE: 651-482-1871

ERSI

ESSENCE
REAL ESTATE
SERVICES INC.

COMMERCIAL REAL ESTATE SINCE 1990

COUNTRY DRIVE OFFICE BUILDING

2925 COUNTRY DRIVE, LITTLE CANADA, MN 55117

FOR SALE

PROPERTY PHOTOS



JEFF SALZBRUN
612-788-1552
jeffs@essencerealestate.com

JEFF NORDNESS
651-341-5044
jeff@essencerealestate.com

OFFICE: 651-482-1871

ERSI

ESSENCE
REAL ESTATE
SERVICES INC.

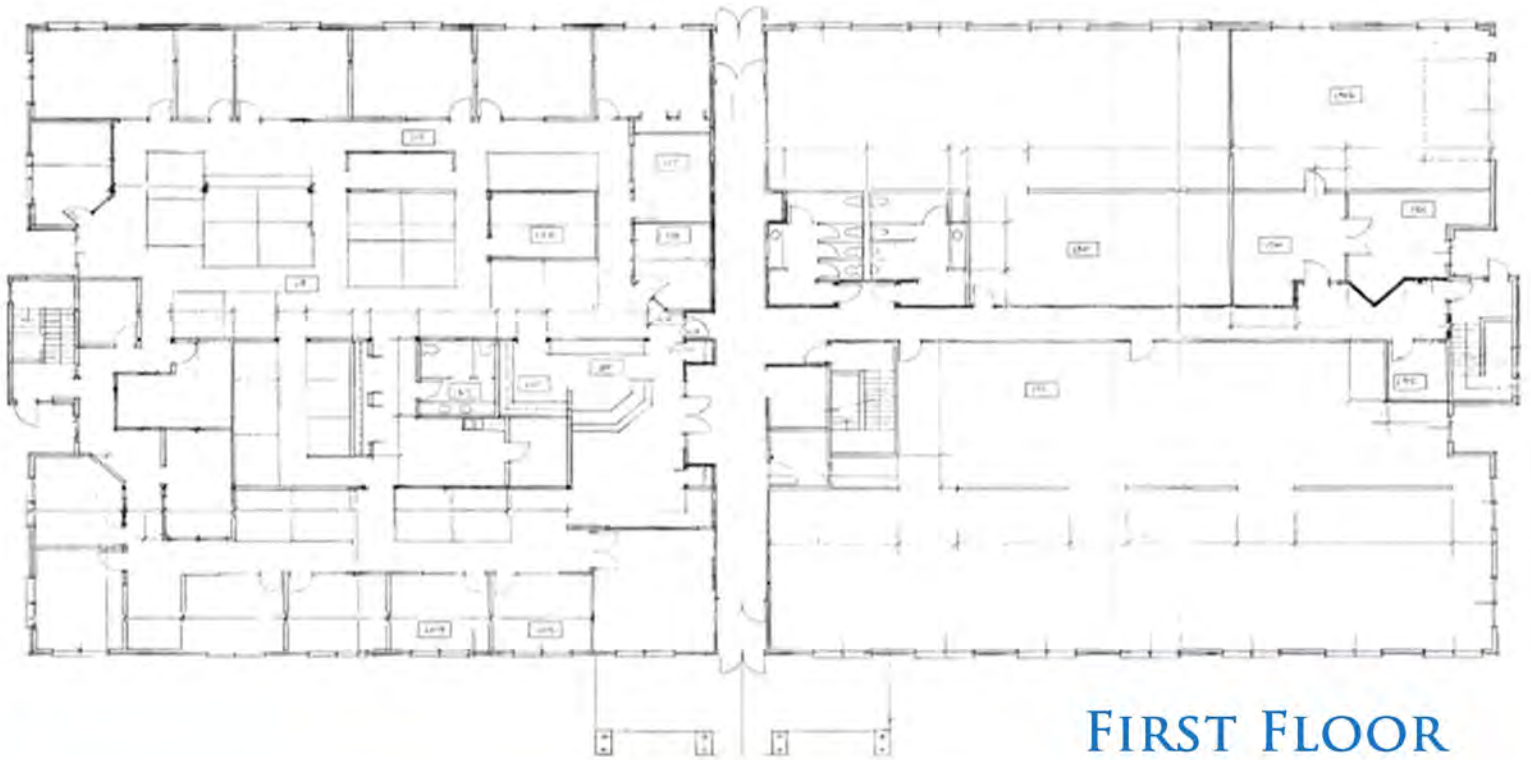
COMMERCIAL REAL ESTATE SINCE 1990

COUNTRY DRIVE OFFICE BUILDING

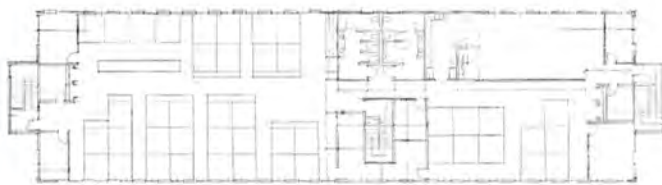
2925 COUNTRY DRIVE, LITTLE CANADA, MN 55117

FOR SALE

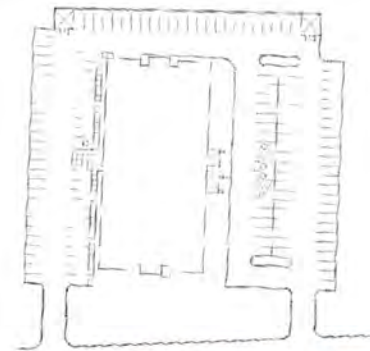
FLOOR PLANS



FIRST FLOOR



2ND FLOOR



SITE LAYOUT

JEFF SALZBRUN
612-788-1552
jeffs@essencerealestate.com

JEFF NORDNESS
651-341-5044
jeff@essencerealestate.com

OFFICE: 651-482-1871

ERSI

ESSENCE
REAL ESTATE
SERVICES INC.

COMMERCIAL REAL ESTATE SINCE 1990