

HIDDEN LAKE OFFICE CONDO

2736 EAST COUNTY ROAD D, WHITE BEAR LAKE, MN 55110

FOR SALE OR LEASE

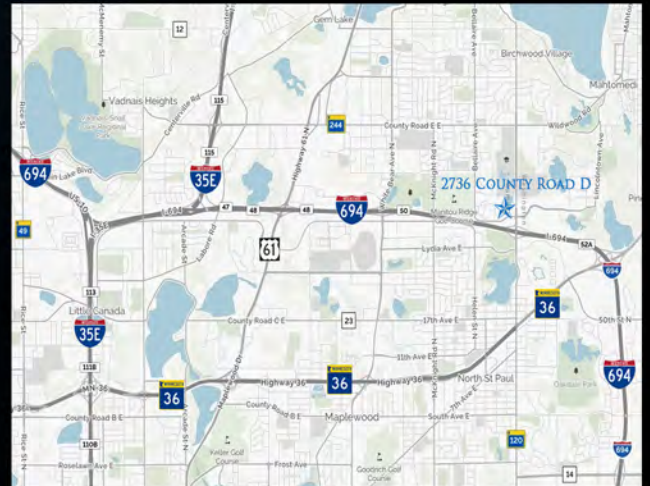
EXECUTIVE OFFICE CONDO!



SALE PRICE: \$ 230,880.00

LEASE PRICE: \$ 16.00 SF GROSS

- 2,080 SF INCLUDING WALKOUT LEVEL
- WALKOUTS ADJACENT TO POND AND NATURE
- END UNIT WITH WINDOWS ON THREE SIDES
- SPECTACULAR AESTHETIC APPEAL
- CENTURY COLLEGE ONLY 1/2 MILE AWAY
- EXCELLENT ACCESS TO I-694
- AREA AMENITIES INCLUDE: MAPLEWOOD MALL, RESTAURANTS, GAS STATIONS, WHITE BEAR LAKE, MANITOU RIDGE GOLF COURSE AND MUCH MORE!



JEFF SALZBRUN
612-788-1552
jeffs@essencerealestate.com

JEFF NORDNESS
651-341-5044
jeff@essencerealestate.com

OFFICE: 651-482-1871

ERSI

ESSENCE
REAL ESTATE
SERVICES INC.

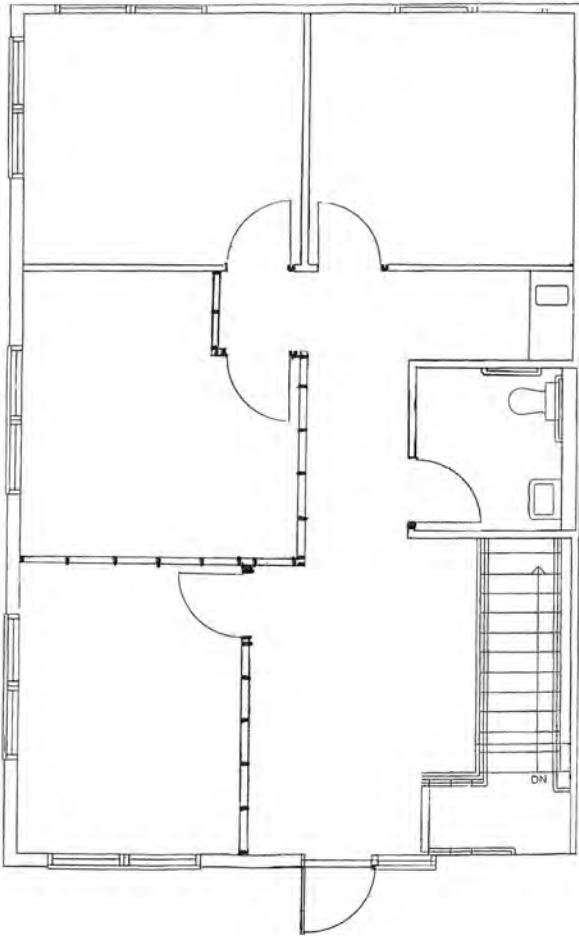
COMMERCIAL REAL ESTATE SINCE 1990

HIDDEN LAKES OFFICE CONDO

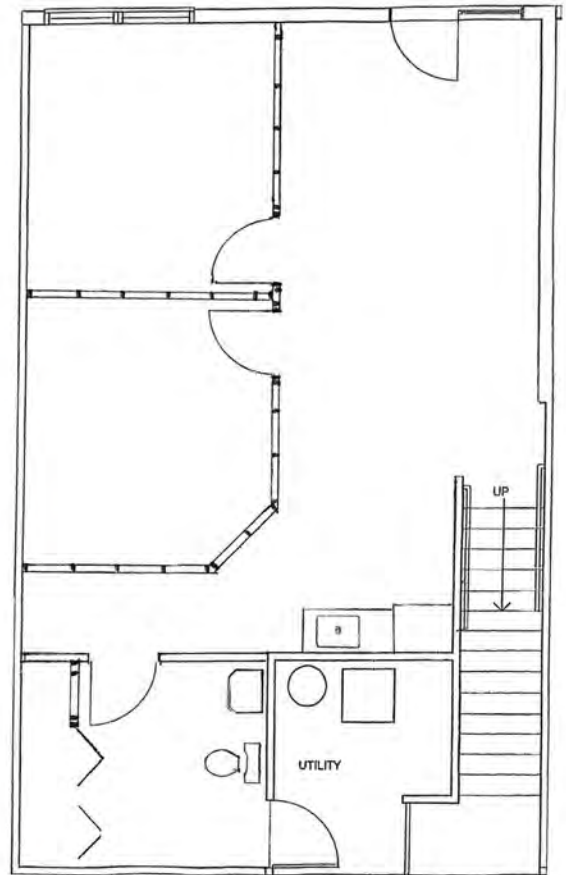
2736 EAST COUNTY ROAD D, WHITE BEAR LAKE, MN 55110

FOR SALE OR LEASE

FLOOR PLAN



MAIN FLOOR



LOWER LEVEL

JEFF SALZBRUN
612-788-1552
jeffs@essencerealestate.com

JEFF NORDNESS
651-341-5044
jeff@essencerealestate.com

OFFICE: 651-482-1871

ERSI

ESSENCE
REAL ESTATE
SERVICES INC.

COMMERCIAL REAL ESTATE SINCE 1990