

MAIN STREET VILLAGE

580 - 5TH AVENUE NW, NEW BRIGHTON, MN 55112

FOR LEASE

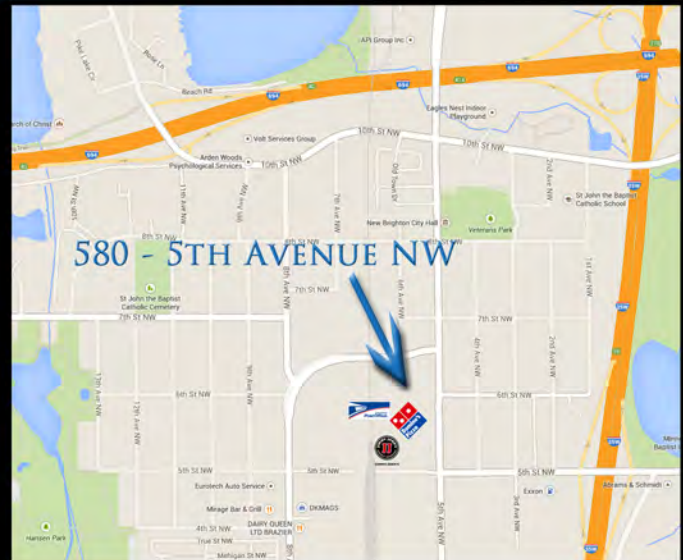
GREAT SMALL OFFICE LOCATION



LEASE RATES:

OFFICE NET RENT \$13.00 SF
2017 EST. OP. EXP. \$ 9.66 SF

- 627 SF AVAILABLE
- GREAT SPACE FOR OFFICE, MEDICAL, OR SERVICE!
- 125 CONDO UNITS ADJACENT W/100% OCCUPANCY (DIRECTLY NORTH OF BUILDING)
- AREA AMENITIES INCLUDE: POST OFFICE, DOMINOES, THE EXCHANGE FOOD AND DRINK AND JIMMY JOHNS
- GREAT VISIBILITY TO 5TH AVENUE (OLD HIGHWAY 8)
- SUPERB ACCESS TO I-35W AND I-694



JEFF SALZBRUN
612-788-1552
jeffs@essencerealestate.com

JEFF NORDNESS
651-341-5044
jeff@essencerealestate.com

OFFICE: 651-482-1871

ERSI

ESSENCE
REAL ESTATE
SERVICES INC.

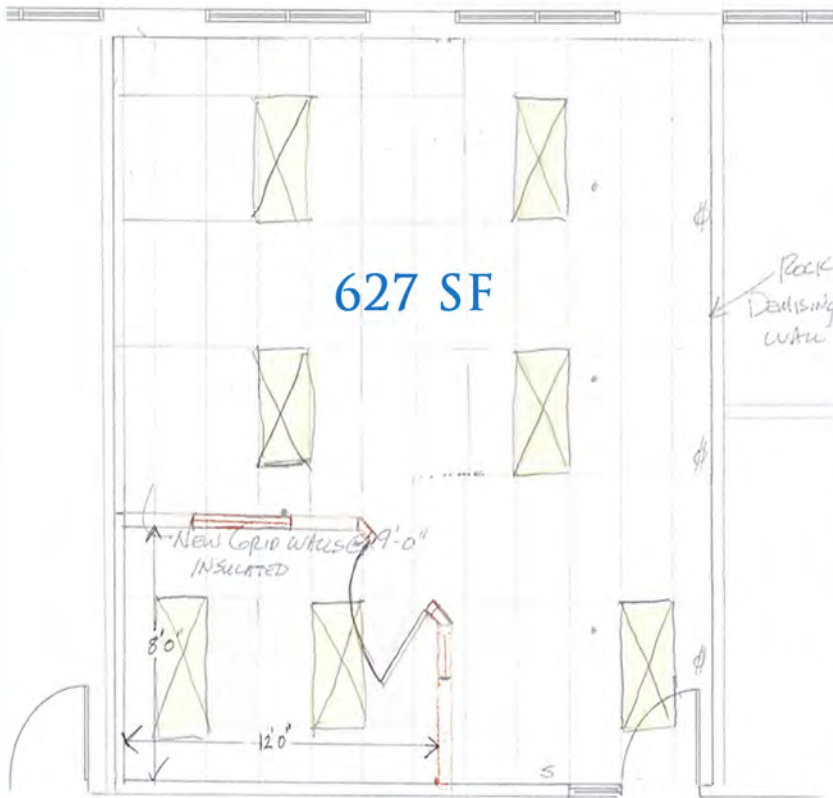
COMMERCIAL REAL ESTATE SINCE 1990

MAIN STREET VILLAGE

580 - 5TH AVENUE NW, NEW BRIGHTON, MN 55112

FOR LEASE

FLOOR PLAN



SUITE 160



JEFF SALZBRUN
612-788-1552
jeffs@essencerealestate.com

JEFF NORDNESS
651-341-5044
jeff@essencerealestate.com

OFFICE: 651-482-1871

ERSI

ESSENCE
REAL ESTATE
SERVICES INC.

COMMERCIAL REAL ESTATE SINCE 1990