

# STONY LAKE OFFICE PARK

2483 - 15TH STREET NW, NEW BRIGHTON, MN 55112

FOR LEASE

GREAT SMALL SPACE



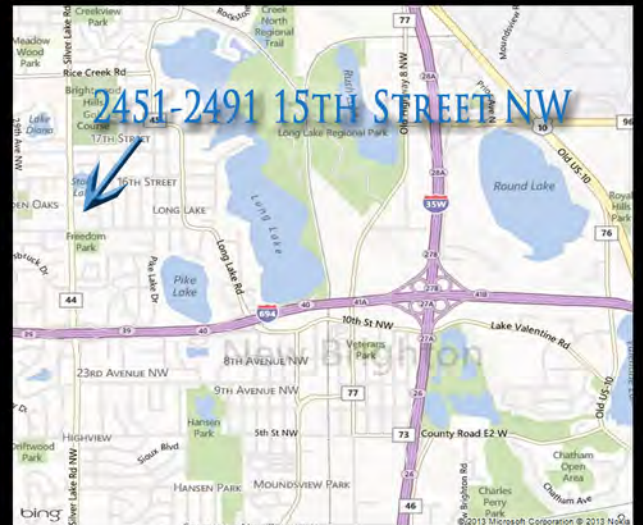
## LEASE RATES

OFFICE NET RENT \$12.50 SF

2017 EST. OP. EXP. \$ 8.36 SF

(EST. OP. EXP. EXCLUDES GAS, ELECTRIC AND SUITE CLEANING)

- 658 SF AVAILABLE
- TERRIFIC ACCESS TO I-694 & I-35W
- PERFECT FOR OFFICE, MEDICAL OR SERVICE
- QUIET, SINGLE-STORY BUILDINGS
- CONVENIENT WINDOWS THAT OPEN
- EXTENSIVE LANDSCAPING
- LOCATED NEAR US BANK, WELLS FARGO, ACAPULCO, SUBWAY, LA FITNESS & COWBOY JACKS!



JEFF SALZBRUN  
612-788-1552  
jeffs@essencerealestate.com

JEFF NORDNESS  
651-341-5044  
jeff@essencerealestate.com

OFFICE: 651-482-1871

# ERSI

ESSENCE  
REAL ESTATE  
SERVICES INC.

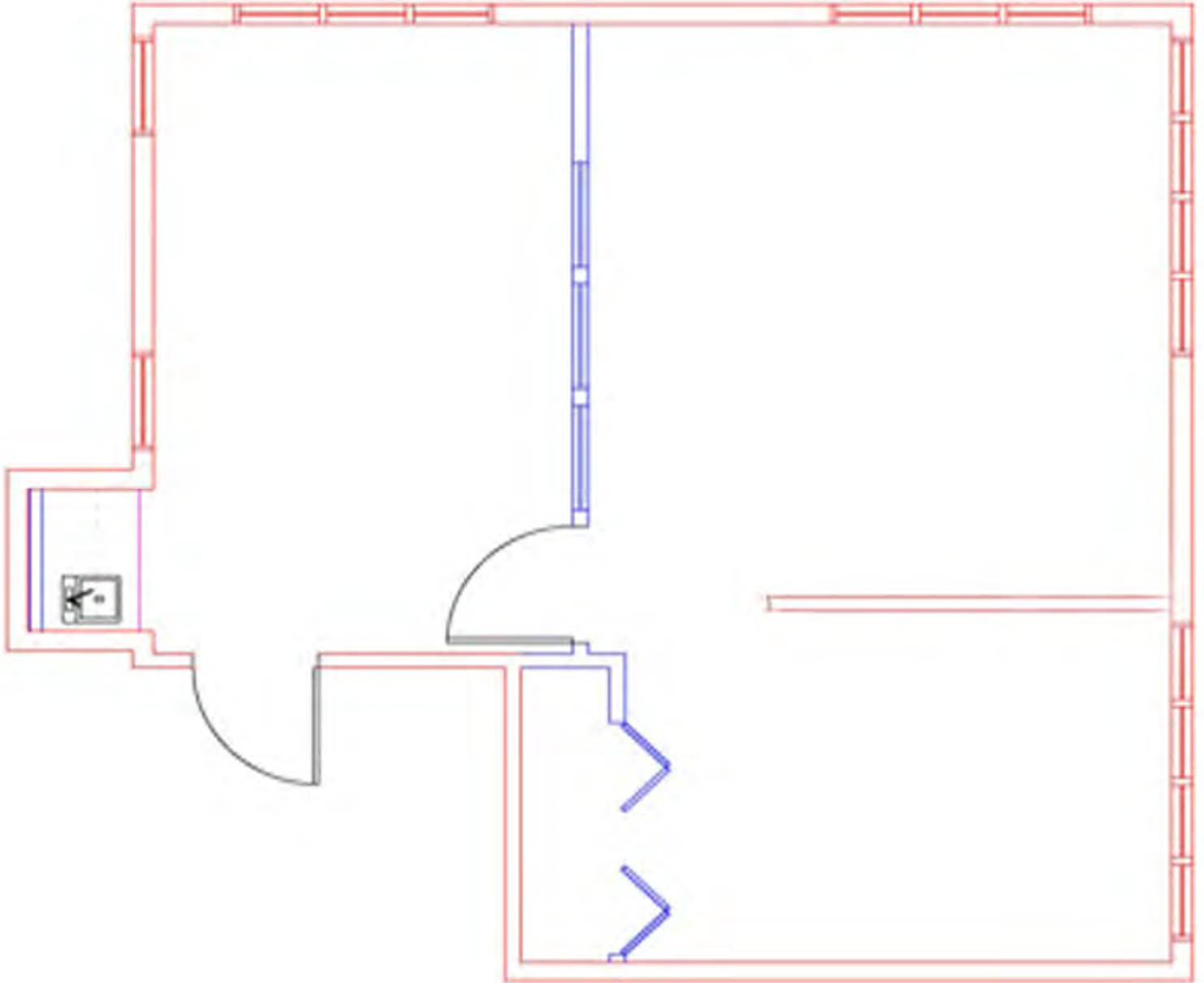
COMMERCIAL REAL ESTATE SINCE 1990

# STONY LAKE OFFICE PARK

2483 - 15TH STREET NW, NEW BRIGHTON, MN 55112

FOR LEASE

2483 - SUITE A



658 SF AVAILABLE

JEFF SALZBRUN  
612-788-1552  
jeffs@essencerealestate.com

JEFF NORDNESS  
651-341-5044  
jeff@essencerealestate.com

OFFICE: 651-482-1871

**ERSI**

ESSENCE  
REAL ESTATE  
SERVICES INC.

COMMERCIAL REAL ESTATE SINCE 1990