



STONY LAKE OFFICE PARK

2451 15TH STREET NORTHWEST, NEW BRIGHTON, MN 55112

- 546 SF AVAILABLE
- IDEAL FOR PROFESSIONAL OFFICE, MEDICAL, OR SERVICE
- MULTI-TENANT CAMPUS SETTING
- EXTENSIVE LANDSCAPING
- OFFICE NET RENT IS \$15.45 SF
- 2024 OPERATING EXPENSE: \$9.72 SF
- TERRIFIC ACCESS TO I-694, AND I-35W
- MANY AREA AMENITIES: MN HEALTH CLINIC, WELLS FARGO, GROCERY, SUBWAY, LA FITNESS, COWBOY JACKS, AND MORE

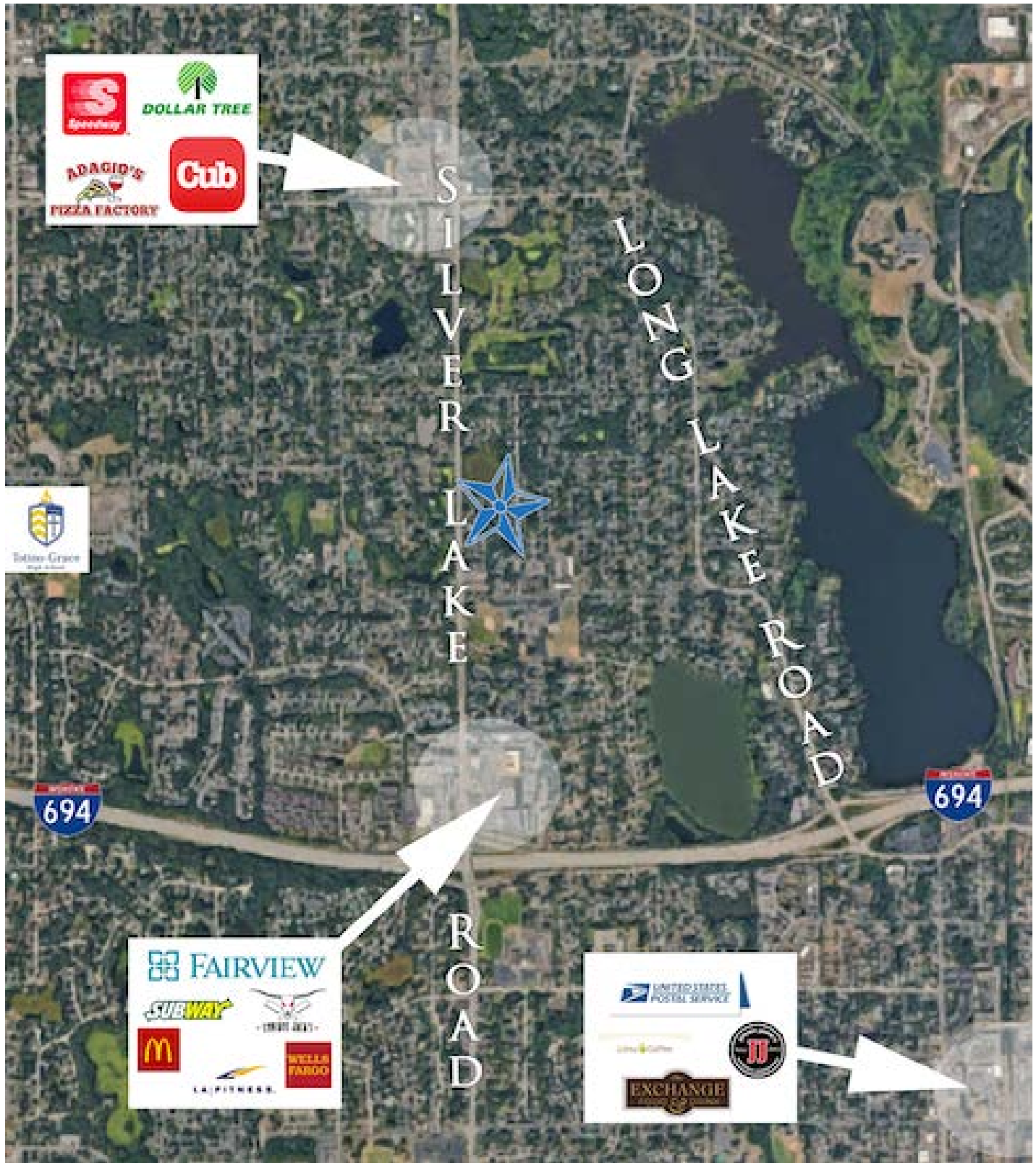
CONTACT:

WWW.ESSENCEREALESTATE.COM

JEFF NORDNESS
jeff@essencerealestate.com
(651) 341-5044

STONY LAKE OFFICE PARK

2451 15th Street Northwest, New Brighton, MN 55112



ERSI

ESSENCE
REAL ESTATE
SERVICES, INC.

COMMERCIAL REAL ESTATE SINCE 1990

JEFF NORDNESS

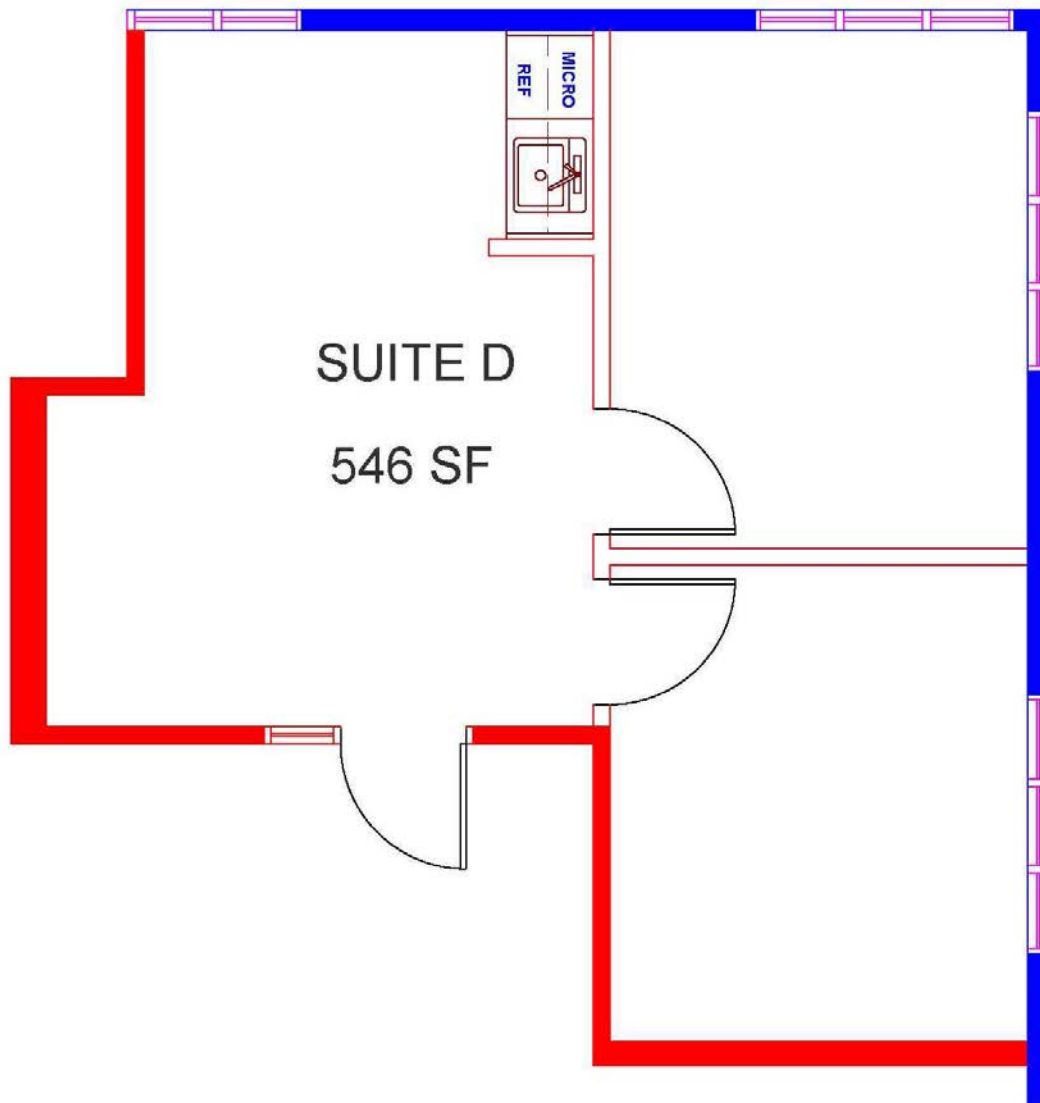
jeff@essencerealestate.com

(651) 341-5044

STONY LAKE OFFICE PARK

2451 15th Street Northwest, New Brighton, MN 55112

THE ESTIMATED MONTHLY COST FOR SUITE D IS \$1,146.00



ERSI

ESSENCE
REAL ESTATE
SERVICES, INC.

COMMERCIAL REAL ESTATE SINCE 1990

JEFF NORDNESS

jeff@essencerealestate.com

(651) 341-5044