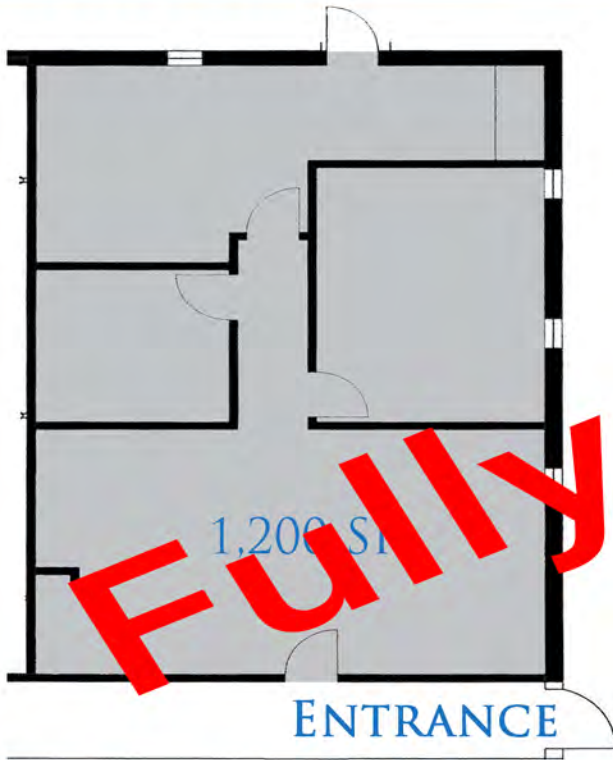


ROSEVILLE OFFICE BUILDING

2400 WEST COUNTY ROAD D, ROSEVILLE, MN 55113

FOR LEASE

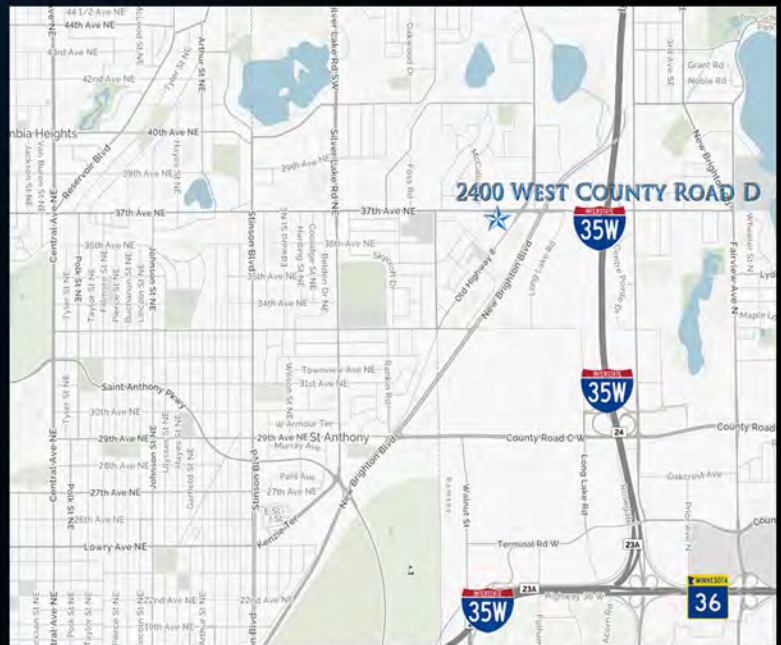
GREAT LOCATION FOR YOUR BUSINESS



LEASE RATES:

\$1,750 PER MONTH

- INDOOR HEATED PARKING
- MOVE-IN READY SPACE
- NEW PARKING LOT IN 2013
- LANDLORD WILL BUILD-TO-SUIT
- AVAILABLE NOVEMBER 1, 2018
- RIGHT OFF 35W AND CTY RD D
- AREA AMENITIES INCLUDE: SUPER AMERICA, SNAP FITNESS, CARIBOU & RESTAURANTS



JEFF SALZBRUN
612-788-1552
jeffs@essencerealestate.com

JEFF NORDNESS
651-341-5044
jeff@essencerealestate.com

OFFICE: 651-482-1871

ERSI

ESSENCE
REAL ESTATE
SERVICES INC.

COMMERCIAL REAL ESTATE SINCE 1990