

# MARYLAND AVENUE BUILDING

911 MARYLAND AVENUE, ST. PAUL, MN 55106

FOR SALE

OFFICE/MEDICAL BUILDING



## REDUCED PRICE

~~\$ 737,000.00~~    \$ 669,000.00

2019 PROPERTY TAX: \$32,950.00

- 9,800 SF BUILDING
- PID# 21-29-22-33-0150
- 53 PARKING SPACES AVAILABLE
- LOCATED OFF 35E, JUST NORTH OF ST. PAUL
- MANY AREA AMENITIES INCLUDING: GROCERY, HOLIDAY STATION, BURGER KING, CVS & WALGREENS AND MUCH MORE.



JEFF SALZBRUN  
612-788-1552  
jeffs@essencerealestate.com

JEFF NORDNESS  
651-341-5044  
jeff@essencerealestate.com

OFFICE: 651-482-1871

# ERSI

ESSENCE  
REAL ESTATE  
SERVICES INC.

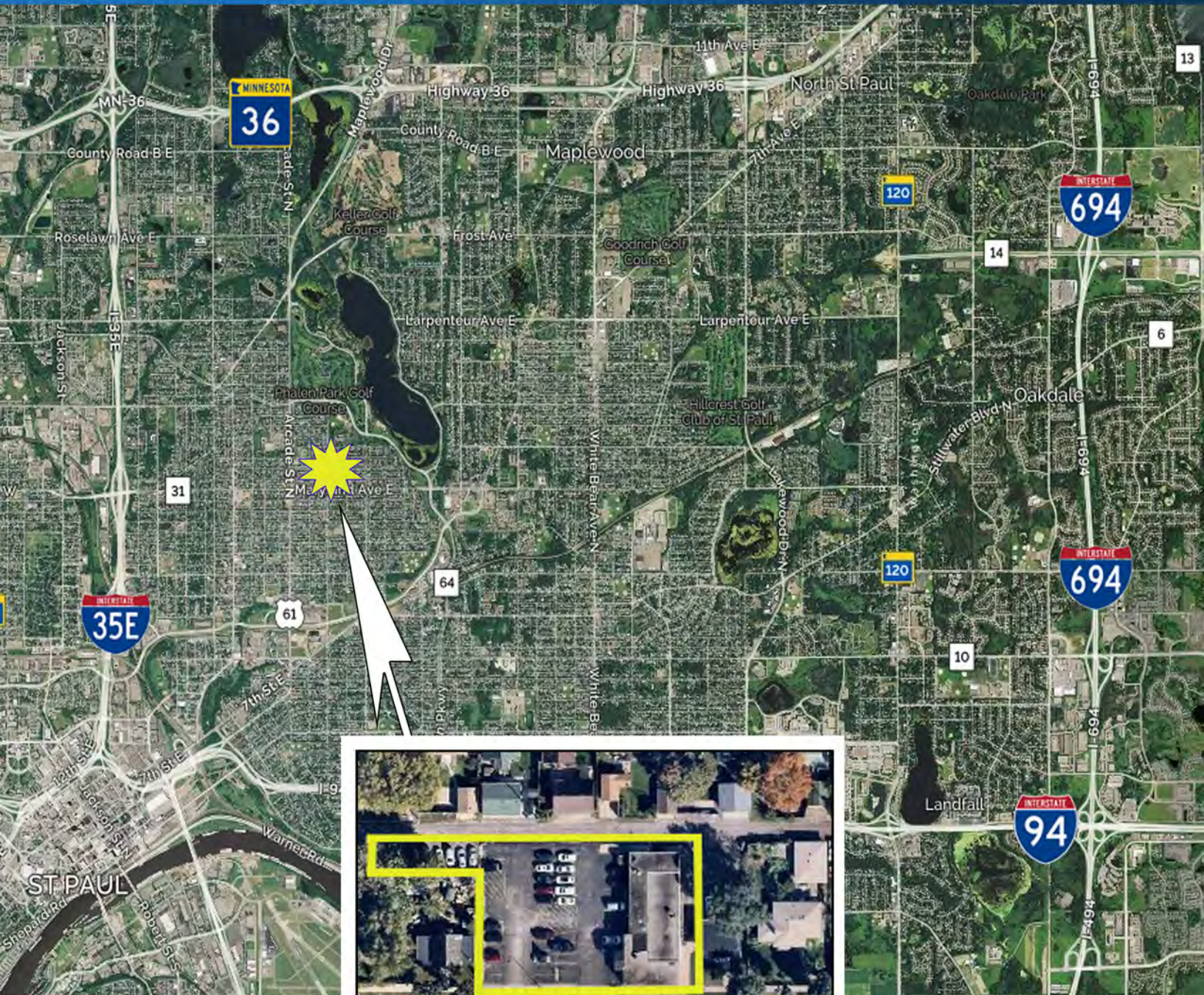
COMMERCIAL REAL ESTATE SINCE 1990

# MARYLAND AVENUE BUILDING

911 MARYLAND AVENUE EAST, ST. PAUL, MN 55106

FOR SALE

AERIAL VIEW



JEFF SALZBRUN  
612-788-1552  
jeffs@essencerealestate.com

JEFF NORDNESS  
651-341-5044  
jeff@essencerealestate.com

OFFICE: 651-482-1871

# ERSI

ESSENCE  
REAL ESTATE  
SERVICES INC.

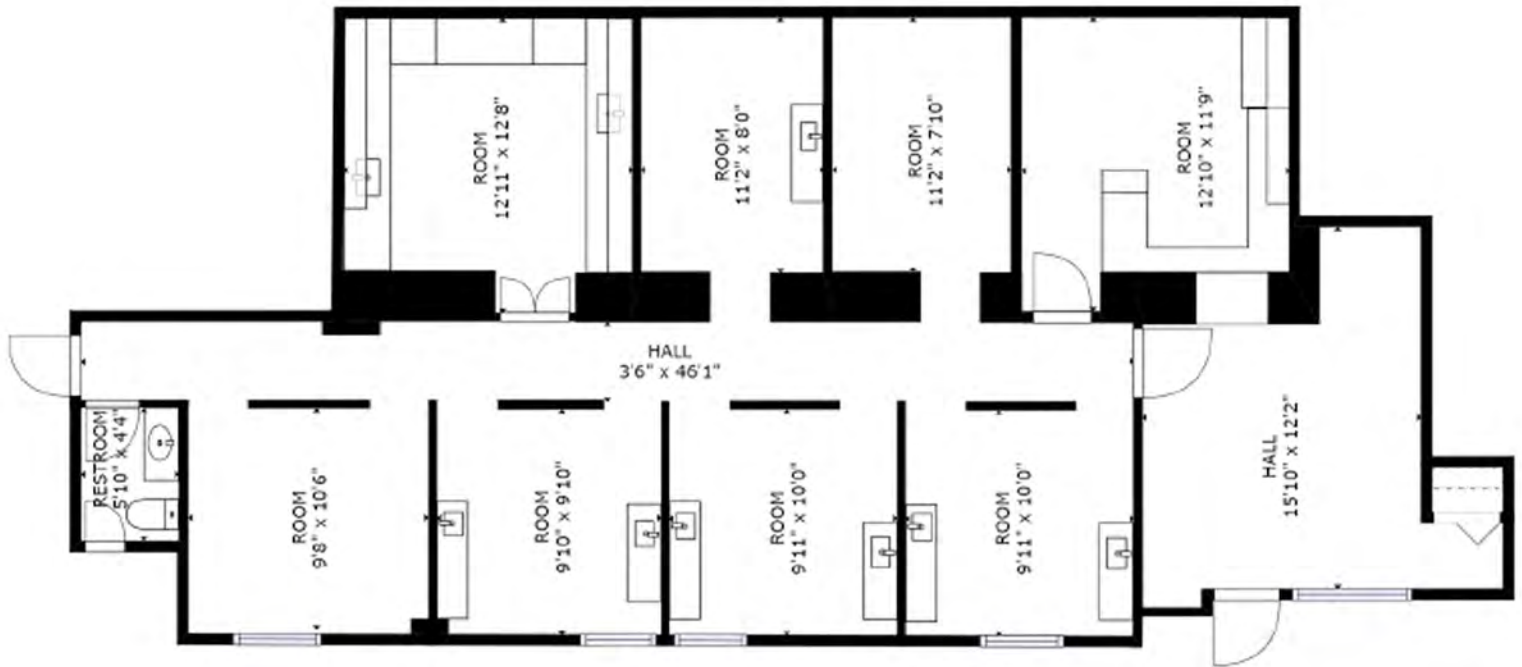
COMMERCIAL REAL ESTATE SINCE 1990

# MARYLAND AVENUE BUILDING

911 MARYLAND AVENUE, ST. PAUL, MN 55106

FOR SALE

1ST FLOOR



JEFF SALZBRUN  
612-788-1552  
jeffs@essencerealestate.com

JEFF NORDNESS  
651-341-5044  
jeff@essencerealestate.com

OFFICE: 651-482-1871

## ERSI

ESSENCE  
REAL ESTATE  
SERVICES INC.

COMMERCIAL REAL ESTATE SINCE 1990

# MARYLAND AVENUE BUILDING

911 MARYLAND AVENUE, ST. PAUL, MN 55106

FOR SALE

2ND FLOOR



JEFF SALZBRUN  
612-788-1552  
jeffs@essencerealestate.com

JEFF NORDNESS  
651-341-5044  
jeff@essencerealestate.com

# ERSI

ESSENCE  
REAL ESTATE  
SERVICES INC.

OFFICE: 651-482-1871

COMMERCIAL REAL ESTATE SINCE 1990