



RICE CREEK PROFESSIONAL BUILDING

5985 RICE CREEK PARKWAY, SHOREVIEW, MN 55126

- \$2,973,000.00
- 2024 TAXES, \$68,190.00
- PID 04-30-23-22-0010
- TWO STORY OFFICE BUILDING WITH ABUNDANT WINDOWS AND 9' CEILINGS
- APPROXIMATELY 28,304 SF BUILDING
- 23,348 SF RENTABLE AREA
- 4,956 SF 3RD FLOOR IS STORAGE/MECHANICAL
- EASY ACCESS TO I-35W, CTY. 96, US 10, AND I-694
- AREA AMENITIES INCLUDE: RESTAURANTS, HOTEL, GAS STATION, AND MORE

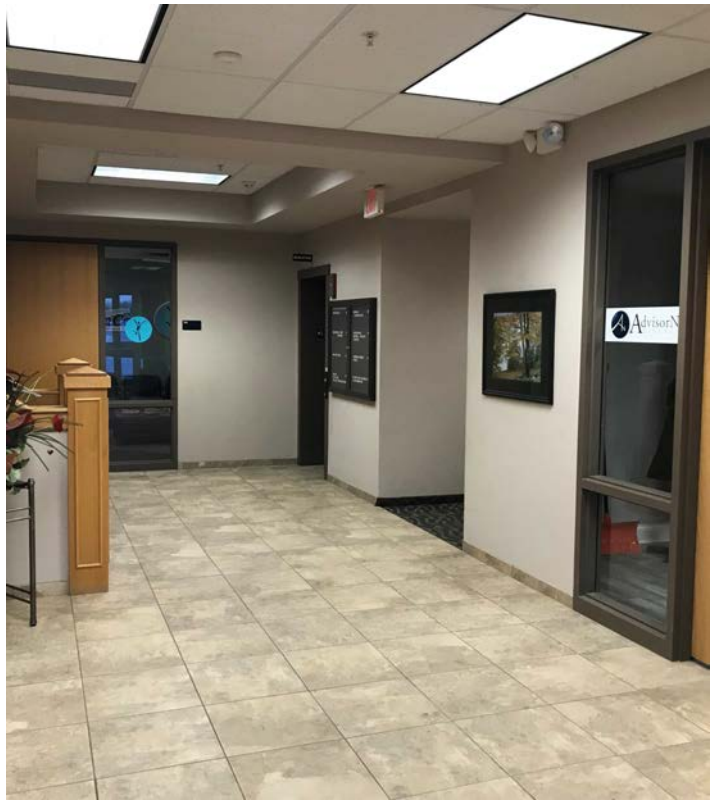
CONTACT:

WWW.ESSENCEREALESTATE.COM

JEFF NORDNESS
jeff@essencerealestate.com
(651) 341-5044

RICE CREEK PROFESSIONAL BUILDING

5985 Rice Creek Parkway, Shoreview, MN 55126



RICE CREEK PROFESSIONAL BUILDING

5985 Rice Creek Parkway, Shoreview, MN 55126



↑ 1ST FLOOR PLANS

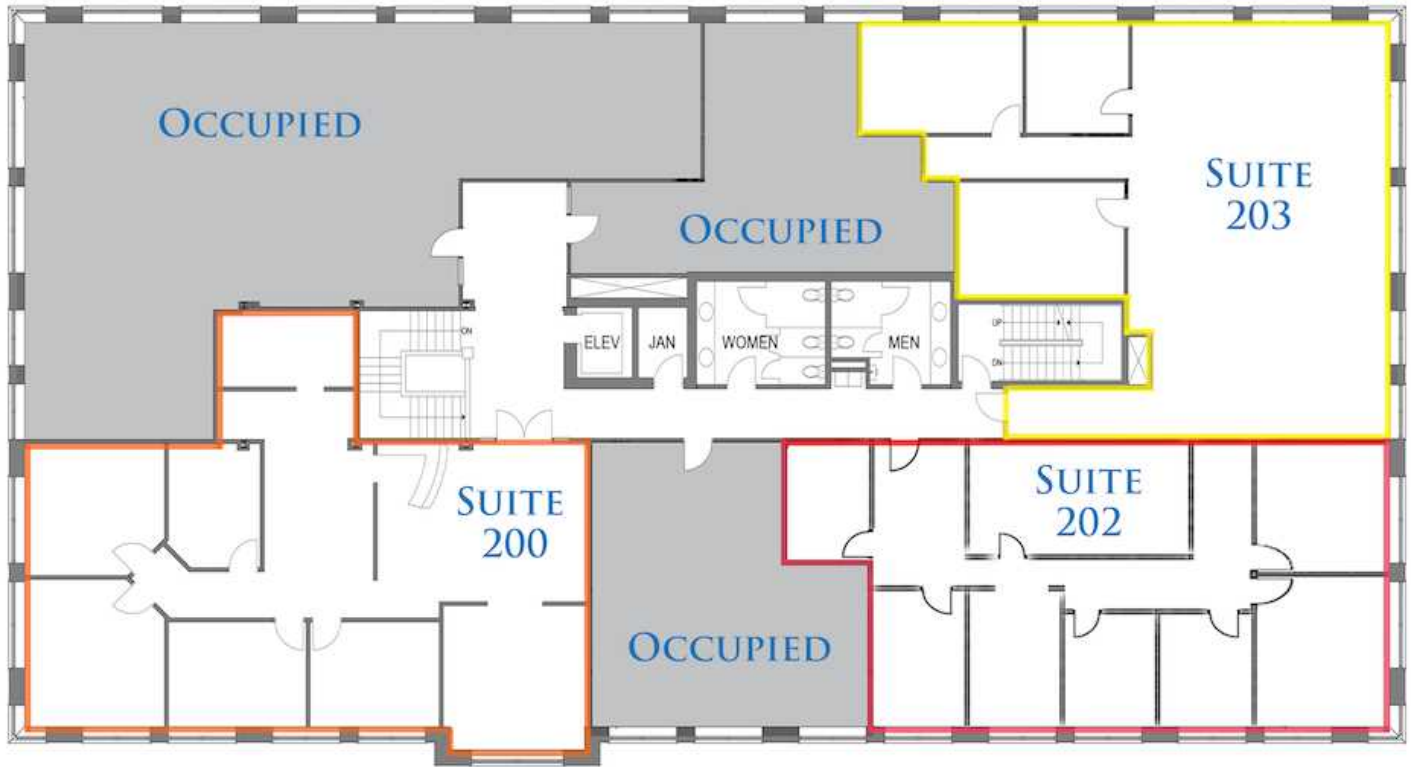
2ND FLOOR PLANS ↘



RICE CREEK PROFESSIONAL BUILDING

5985 Rice Creek Parkway, Shoreview, MN 55126

Available Suites



SUITE 200 2,625 SF
SUITE 202 2,240 SF
SUITE 203 2,592 SF

➤ 4,832 SF CONTIGUOUS