



4455 SUITES

4455 WHITE BEAR PARKWAY, WHITE BEAR LAKE, MN

- SUITE 200: 814 SF AVAILABLE
- SUITE 300: 492 SF AVAILABLE
- SUITE 600: 1,488 SF AVAILABLE
- \$22.00 OFFICE GROSS RENT
- SPECTACULAR GLASS LINES
- AMPLE PARKING
- FANTASTIC ACCESS TO I-35E AND HWY. 96
- AREA AMENITIES: LODGING, DINING, CARIBOU COFFEE, CONVENIENT STORES, GAS STATIONS, CUB FOODS AND MORE

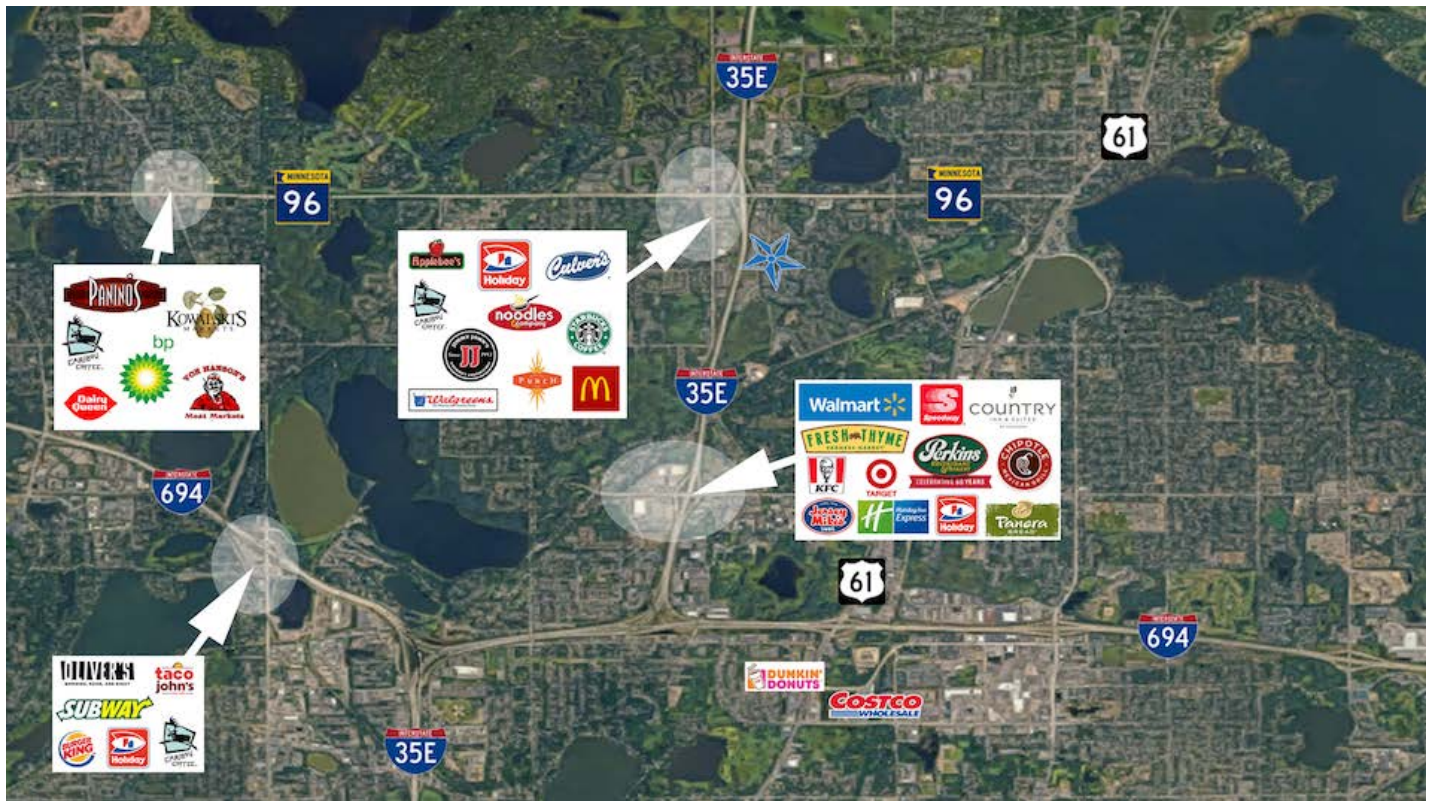
CONTACT:

WWW.ESSENCEREALESTATE.COM

JEFF NORDNESS
jeff@essencerealestate.com
(651) 341-5044

4455 SUITES

4455 White Bear Parkway, White Bear Lake, MN 55110



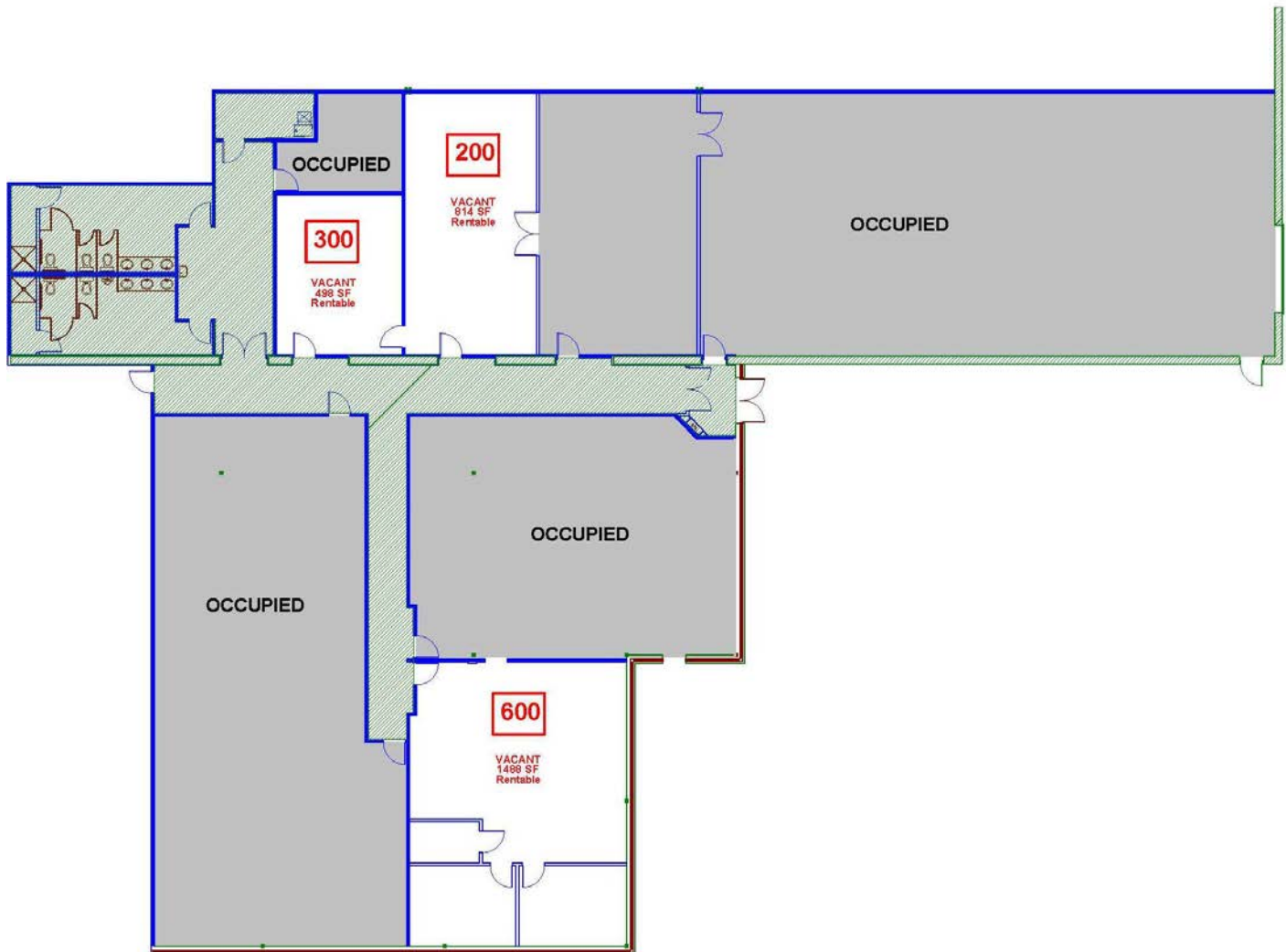
FLOOR PLAN

4455 White Bear Parkway, White Bear Lake, MN 55110

THE ESTIMATED MONTHLY COST FOR SUITE 200, 814 SF IS \$1,493.00

THE ESTIMATED MONTHLY COST FOR SUITE 300, 492 SF IS \$902.00

THE ESTIMATED MONTHLY COST FOR SUITE 600, 1,488 SF IS \$2,728.00



ERSI

ESSENCE
REAL ESTATE
SERVICES, INC.

COMMERCIAL REAL ESTATE SINCE 1990

JEFF NORDNESS

jeff@essencerealestate.com

(651) 341-5044